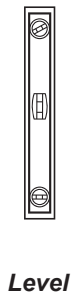
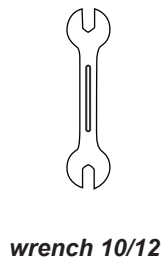
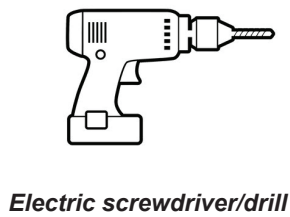
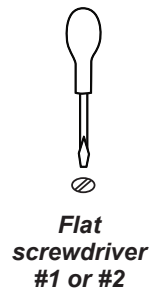
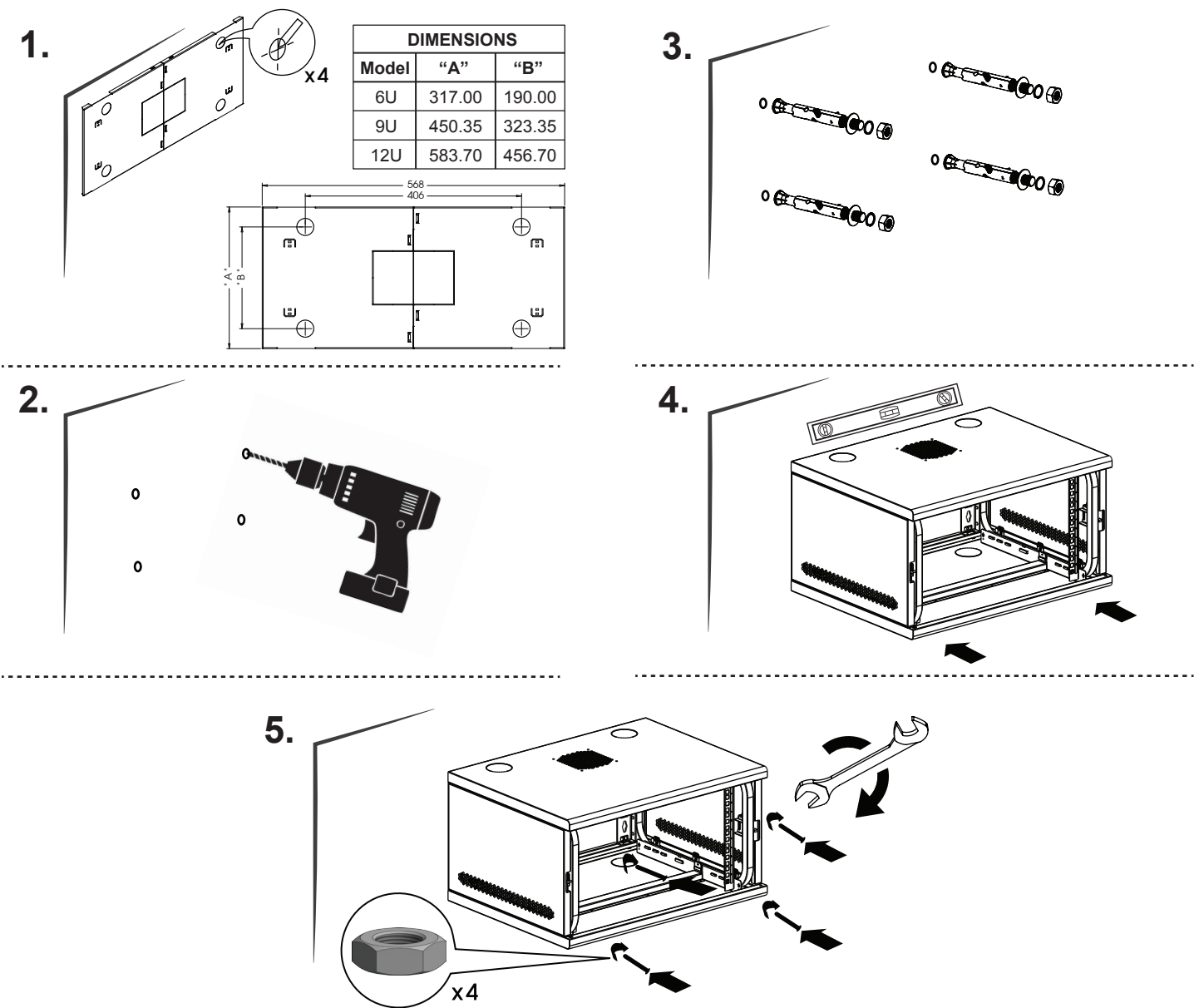



Tools Required



Installing The Arion One Piece Wall Box

 Please check that all parts of Arion One Piece Wall Box are assembled firmly together before mounting on the wall.



 **Warning:**

- 1. IT equipment must be installed on the 19" Mounting Rails.
- 2. IT equipment should be installed on a mounting bracket or shelf which is attached to the front and rear 19" rails. (Rear 19" rails can be purchased separately).
- 3. Do not place any item exceeding 4 kg (9 lbs) directly on bottom panel.

Assembly Guide

ARION

One Piece Wall Box




Product Information

Cheval's new Arion wall box is a single section unit suitable for most IT applications. Our patented design eliminates assembly hardware while the unique heavy duty steel tube frame supports 60 KG (132 lbs.) We have enhanced security and improved access with swing out side panels which can only be opened from the inside. The high density perforated front door is equipped with a sturdy lock to prevent unauthorized access.

Company Profile

Cheval is a global leader in the design and manufacturing of 19" enclosures and related ICT (Information Communications Technology) products. Please visit www.chevalgrp.com or www.chevalstore.com

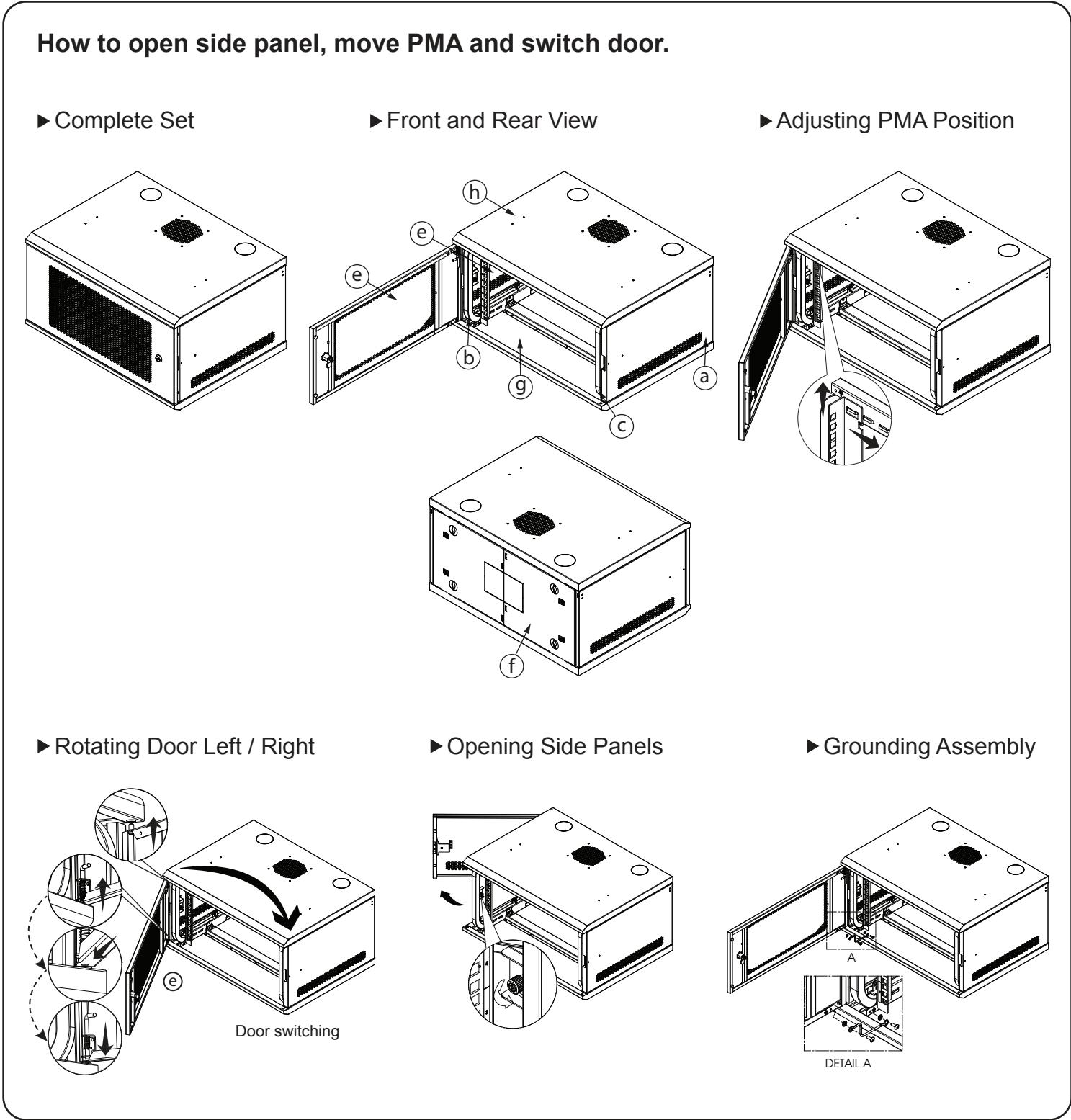
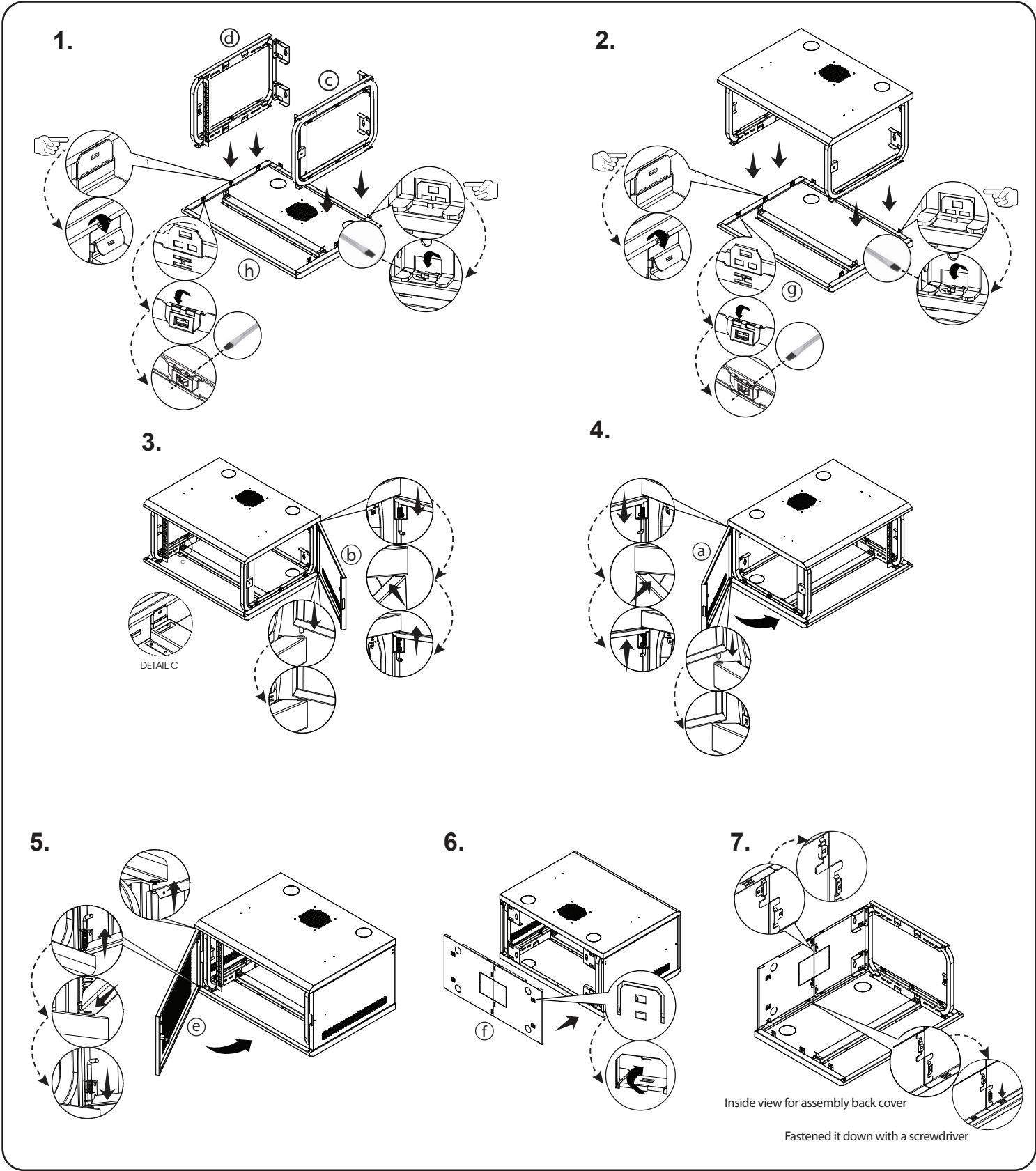
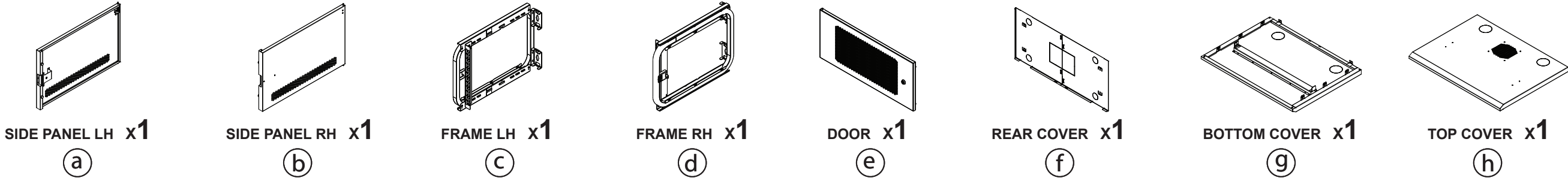


Assembly Guide

Read this assembly guide for information about product safety, installation.

Assembling Your Arion One Piece Wall Box [Make sure you have all the parts shown, and assemble following these instructions.]

Parts List



Warning: Product can be damaged when handled incorrectly. We recommend lifting the product at the edges, as shown.

